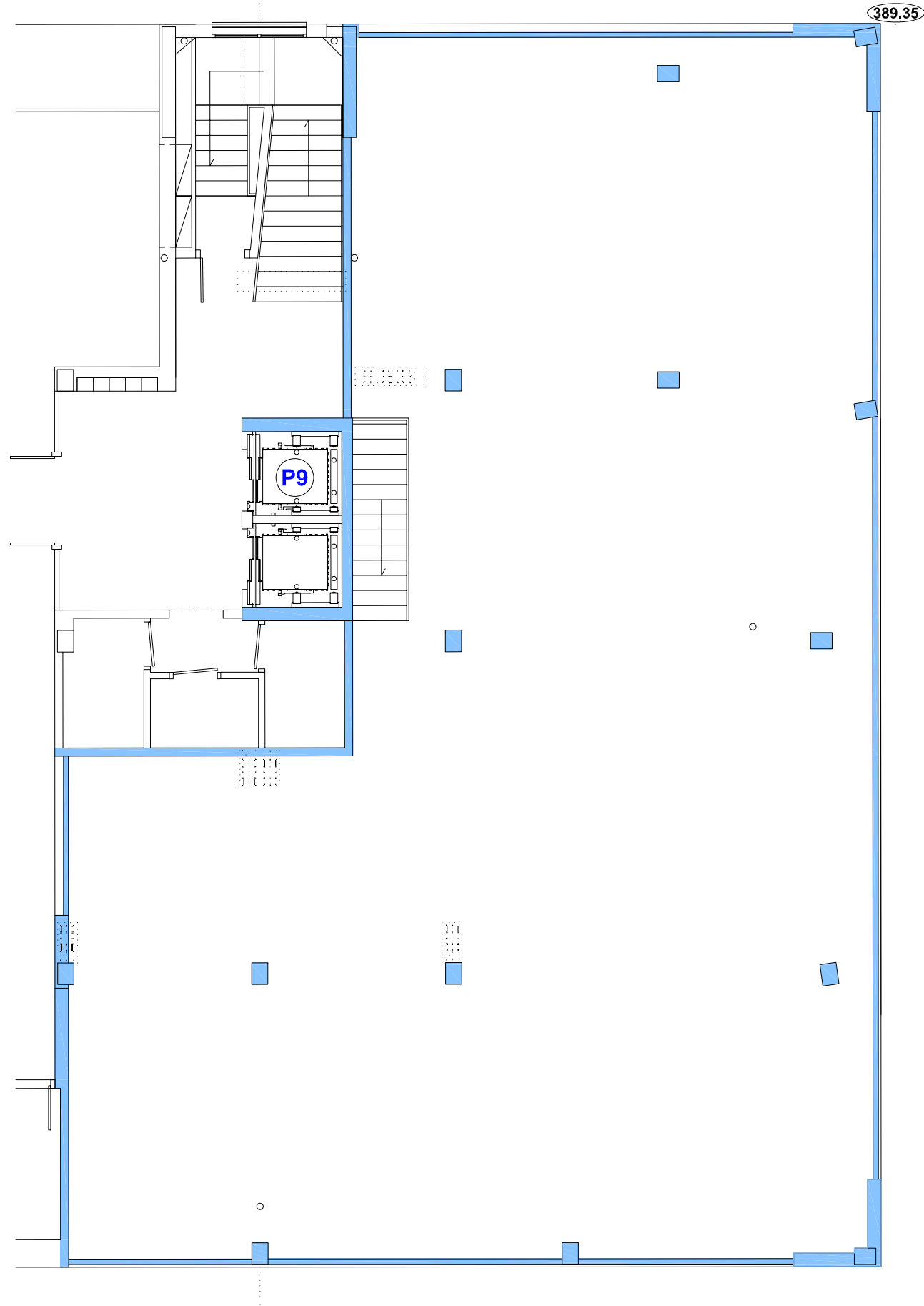
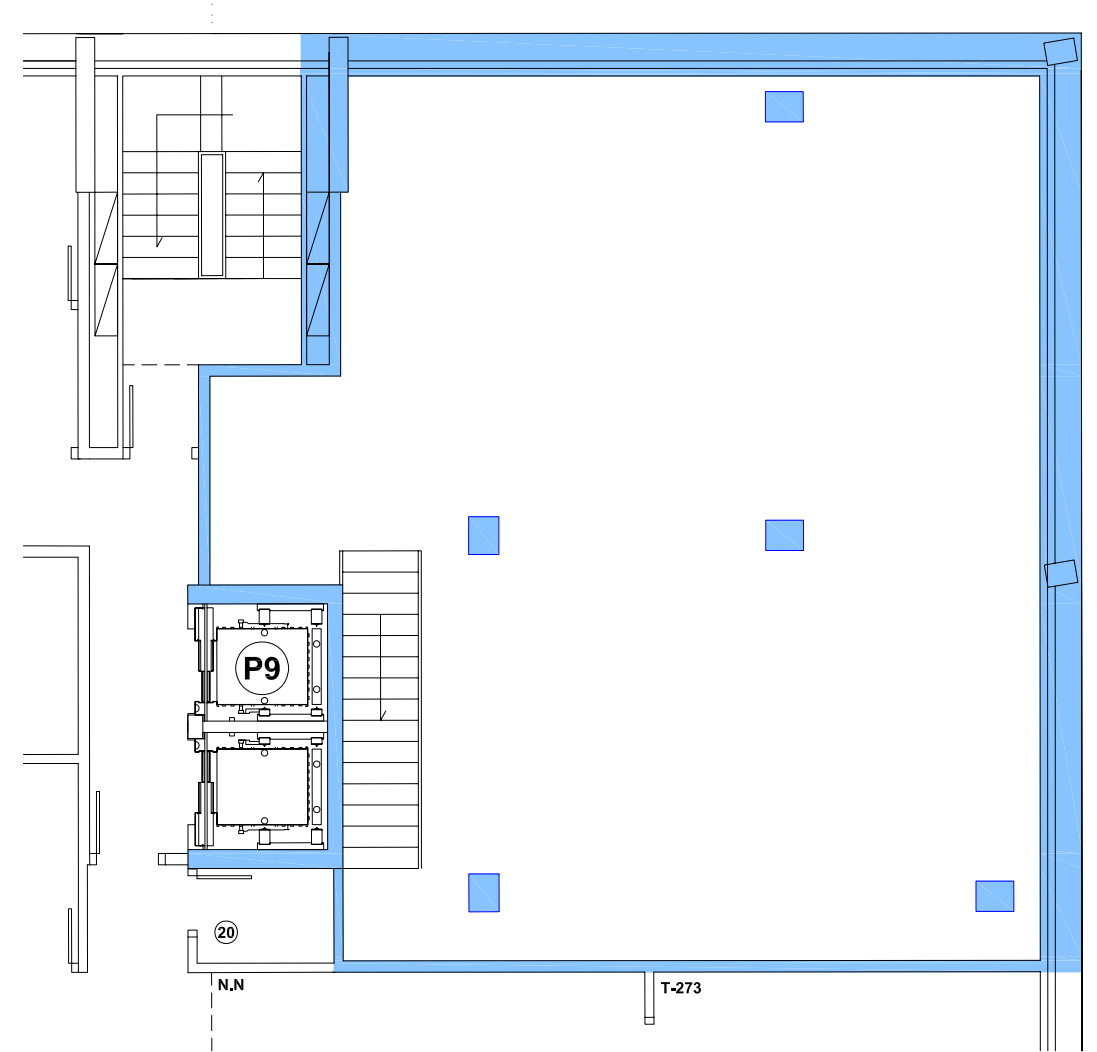


PLANTA BAJA



PLANTA SOTANO



| LOCAL PORTAL 9 (TORRE NORTE) | | |
|------------------------------|---------------|-----------------|
| LOCAL | Sup. Útil | Sup. Construída |
| 2 EN P. BAJA | 262,55 | 278,64 |
| 2 EN P. SÓTANO 1 | 112,72 | 117,03 |
| TOTAL | 375,27 | 395,67 |
| | | |
| | | |
| | | |

LOCAL TORRE NORTE
ESC. 1=100